

Instructions for **Trial Examination** | for Japanese University Admission for International Students (EJU) .

1. Details of the Examination for Japanese University Admission for International Students

(1) Aims

This examination is used to evaluate the Japanese language proficiency and basic academic abilities of international students who wish to study at the undergraduate level at universities or other such higher educational institutions in Japan.

(2) Examination Subjects

According to the requirements of the university they want to enter and the course of study they want to pursue, the examinees select the subject tests that they will take from the following table. Examinees may not choose to take both the Science test and the Japan and the World test.

Subject	Purpose	Length	Score Range
Japanese as a Foreign Language	Measurement of the Japanese language skills (academic Japanese) required for studying at Japanese universities.	125 minutes	reading comprehension, listening and listening-reading comprehension 0-400
			Writing 0-50
Science	Measurement of the basic academic skills in science (Physics, Chemistry, and Biology) necessary for studying in a science department of a Japanese university.	80 minutes	0-200
Japan and the World	Measurement of the basic academic skills in liberal arts, particularly thinking and logical abilities, necessary for studying at Japanese universities.	80 minutes	0-200
Mathematics	Measurement of the basic academic skills in mathematics necessary for studying at Japanese universities.	80 minutes	0-200

The score range mentioned above, excluding the writing of Japanese as a Foreign Language, will not be given in the form of the raw score but on a common scale. The writing will be scored based on the standard.

(3) The Structure and Evaluation of Japanese as a Foreign Language

- Structure: The test in Japanese as a Foreign Language consists of writing, reading comprehension, and listening and listening-reading comprehension.
- Order and Time: The order of the examinations is writing (30 minutes), reading comprehension (40 minutes), listening-reading comprehension, and listening comprehension (about 55 minutes including listening-reading comprehension and listening comprehension).
- Score range: The score range 0—400 totaling reading 0—200, and listening comprehension and listening-reading comprehension 0—200, and the score range 0-50 for writing will be indicated.

(4) The Structure of Science

In the science area, according to the requirements of the university they want to enter and the course of study they want to pursue, **examinees have to select two subjects from physics, chemistry and biology on the examination day.**

(5) The Structure of Mathematics

In the mathematics area, according to the requirements of the university they want to enter and the course of study they want to pursue, **examinees have to select either Course 1 for liberal arts faculties or science faculties where comparatively less mathematics is required, or Course 2 for faculties where higher level mathematics is required on the examination day.**

(6) Subject Test Syllabi

A syllabus for each subject test is posted on the JASSO website.

www.jasso.go.jp/en/eju/examinee/syllabus/

(7) Examination Language

The questions can be written in Japanese or English. (The examination of Japanese as a Foreign Language will be written only in Japanese.) Since the Japanese and English question booklets will be different, according to the requirements of the university they want to enter and the course of study they want to pursue, **the examinee should notify which they prefer in the application.**

(4) Answering Method

The answering method is **mark-sheet**. Make sure you **use an HB pencil** to blacken the number for the answer. You cannot use a ball-point pen or pen. Numbers that are blackened too lightly will not be marked.

Examination scores are calculated by totaling the points for all correct answers. No points are subtracted for incorrect answers.

(5) Prohibited Behavior

If you behave in the following ways, it will be regarded as prohibited behavior. Accordingly, you will be asked to leave the examination room, and your answers in all of the subjects that you took will be invalidated. (Examination fee shall not be refunded.)

- a. **Electronic devices such as a mobile phone etc. that you brought make sounds or generate the vibration mode sounds during the examination. (They include watch alarm sounds.)**
- b. **You place one of electric devices such as a mobile phone (including PC, handheld terminal, IC recorder, audio player, game machine, digital camera, electronic dictionary, calculator, etc.) on your chair or desk, hold it in your hand, put it on yourself, or use/operate it during the examination. (It will be regarded as prohibited behavior even if you just put your headphones round your neck.)**
- c. Someone else but you takes the examination on your behalf.
- d. You speak with other examinees, give answers to other examinees, receive answers from other examinees, or commit other acts of cheating (looking at a reference book, crib, newspaper, handbill or the answer sheet of another examinee) during the examination.
- e. You intentionally write answers on an answer sheet which is not yours, or you exchange your question booklet or answer sheet with another examinee in the examination venue.
- f. You tear off the question booklet.
- g. You transcribe or photograph questions or answers during the examination.
- h. You use memo paper and others that you brought to the venue. This includes writing on your examination voucher or its envelope or the desk. It is also prohibited to write anything if it is unrelated to the exam.
- i. You leave the examination room without the permission of the examination staff.
- j. You do something that causes problems for other examinees.
- k. **You do not obey the instructions of the examination staff.**
- l. **You open the question booklet or start to answer before the proctor says, "Please start."**
- m. You don't stop writing on the answer sheet when the proctor says, "Please stop."
- n. **In the "Japanese as a Foreign Language" examination, you answer another section, for example responding to "Reading Comprehension" questions during the "Writing" section.**
- o. In the "Japanese as a Foreign Language" test, you answer the actual questions in the "Listening-Reading Comprehension" or "Listening Comprehension" section during the practice exercise of the "Listening-Reading Comprehension" or "Listening Comprehension" section.
- p. You behave suspicious before the proctor says, "Please dismiss".
- q. You walk out of the examination room after the examination is over but before the staff has collected and checked the question booklets and the answer sheets.
- r. You take the question booklet or answer sheets out of the examination room after the examination is over. (including you take photograph, copy or record the questions.)
- s. An examination staff member determines that you behaved improperly in some other way during the examination.

Note: The things which are used for Prohibited Behavior (memo or crib etc.) will be confiscated at that time and will be never returned.

(6) Your Name and Examination Registration Number on the Answer Sheet

Your name (in the Roman alphabet) and examination registration number will be pre-printed on your answer sheet that will be provided on the examination day. When you are given the answer sheet, first of all, check that the name and examination registration number on the answer sheet are the same as those on your examination voucher.

If the name and examination registration number on the answer sheet are obviously not yours, notify the examination staff immediately.

If you write answers on an answer sheet that is not yours or if you correct the name and examination registration number by yourself without notifying the staff and then write in the answers, your examination will not be graded.

13. Answering Method

(1) Question Booklet

- Make sure you do not open the question booklet until instructed to do so. (If you do, it will be regarded as prohibited behavior.)
- Make sure you do not take the question booklets home with you after the examination.** (If you do so, it will be regarded as prohibited behavior.)

(2) Answer Sheet

- For Japanese as a Foreign Language, two types of answer sheets (mark-sheet and writing method) will be provided. For mathematics, science, Japan & the World, an answer sheet (a mark-sheet, or a computer-scored answer sheet) will be provided.
- Your examination registration number and name (in Roman alphabet) will be pre-printed on your answer sheet that will be provided. When you are given the answer sheet, first of all, check that the examination registration number and name on the answer sheet are the same as those on your examination voucher.
- Write down all your answers on the answer sheet. Even if you write the answers on the question booklet, they will not be graded.
- The answer sheet in the writing method for Japanese will be collected when the writing section is over.
- Make sure you do not take the answer sheets home with you after the examination. (If you do, it will be regarded as prohibited behavior.)

(3) Points to Note about Marking the Mark-sheet

- In the mark-sheet method, select the answer you think is correct from the choices after the questions and blacken completely the corresponding number on the mark-sheet using a pencil.
- Make sure you use an HB pencil to blacken the number for the answer. You cannot use a ball-point pen or pen.
- Numbers that are blackened too lightly or not neatly blackened will not be graded.
- When correcting incorrectly blackened numbers, completely them using a plastic eraser so that no traces of the pencil remain. Numbers that are not completely erased will not be graded. You must not use things such as white-out in place of an eraser.

(4) How to Answer for Japanese as a Foreign Language

The writing section

- Make sure you use an HB pencil to write the answer. You cannot use a ball-point pen or pen.
- Two themes will be given, select and answer either one. You must circle your selection number of the theme on the answer sheet.
- Write the sentence using one square per one character from left to right

[Answer sheet]

人	々	の	生	活	は	、	時	代	と	と	も	に	変	化	す	る	。	現	
代	の	私	た	ち	は

- When correcting, completely erase characters using a plastic eraser so that no traces of the pencil remain. You must not use things such as white-out in place of an eraser.

The reading section

- One of the row numbers **1** , **2** , **3** , ... is provided for each question in the question booklets. These numbers are also printed on the answer sheets, so blacken the one appropriate answer choice (1. to 4.) in the answer row with the same row number given in the corresponding quest

[Exercise]

問 いいことを言った人は、それを聞いた人の記憶について、どう考える傾向がありますか。	14
1. 覚えていなくても仕方ない。	
2. 覚えているわけがない。	
3. 数日なら覚えているだろう。	
4. 覚えているものだ。	

[Answer Sheet]

14	①	②	③	●
-----------	---	---	---	---

Row number

The listening-reading section

- f. Listen carefully to the audio recording because you can do so only once.
- g. The listening-reading section consists of questions that require you to look at charts, pictures, or textual information while listening to sounds. Possible answers are given in the question booklet.
- h. Although there are four possible answers on the question booklet, only one is correct. Select the answer you think is correct from the choices and blacken completely the corresponding number on the mark-sheet.

[Exercise]

(Audio recording)

学生がコンピュータの画面を見ながら先生の説明を聞いています。学生は今、画面のどの項目を選ばいいですか。

先生：えー、これから、この大学のコンピュータの使い方について説明します。

では、コンピュータの画面を見てください。今日は、おおまかな説明しかしませんが、もっと詳しいことを知りたい人は、右上の「利用の仕方」などを見ておいてください。ああ、今じゃなくて、あとで。あとで見ておいてください。

今日はまず、コンピュータを使えるようにするために、利用者の登録をします。では、画面の左下の項目を選んでください。

(Question booklet)

学生がコンピュータの画面を見ながら先生の説明を聞いています。
学生は今、画面のどの項目を選ばいいですか。

谷山大学情報メディアセンター
ホームページ

1	■ お知らせ	■ 利用の仕方	2
3	■ 各種手続き	■ 質問コーナー	4

[Answer Sheet]

練習	①	②	③	④	➡	練習	①	②	●	④
----	---	---	---	---	---	----	---	---	---	---

The listening section

- i. Listen to the audio recording carefully because you can do so only once.
- j. In the listening section, there are no answers printed in the question booklet. There are possible answers on the audio recording.
- k. Although there are four possible answers on the audio recording, only one is correct. From these four answers, select the one that you think is correct, and mark the "Correct" column as well as the "Incorrect" column.
- l. **Please note that the entire Japanese as a Foreign Language test ends when the audio recording for the listening section ends.**

[Exercise]

(Audio recording)

女子学生と男子学生が、待ち合わせの場所で話しています。この二人は、これからどうしますか。

女子学生：あ、お待たせ。山田さんはまだ？

男子学生：うん。さっき連絡があって、急用ができたから、ちょっと遅れるって。待ってるって言ったんだけど、先に行ってくれって。

女子学生：じゃ、そうする？でも、山田さん、研究会の場所、知ってるのかなあ？

男子学生：どうだろう？

女子学生：また、連絡してみたら？

男子学生：いや、大丈夫だよ。先にどうぞって言ったんだから。

女子学生：そう言ってるのなら、大丈夫ね。

この二人は、これからどうしますか。

1. 山田さんを待ってから行く。
2. 山田さんに先に行ってもらおう。
3. 山田さんに連絡をする。
4. 山田さんより先に行く。

[Answer Sheet]

練習	正しい	①	②	③	④	➡	練習	正しい	①	②	③	●
	正しくない	①	②	③	④	正しくない		●	●	●	④	

The correct answer is 4, so mark the answer number 4 in the "Correct" row on the answer sheet. You must also mark the numbers 1, 2, 3 in the "Incorrect" row.

(5) How to Answer for Science

- Science consists of "physics", "chemistry" and "biology". There is one booklet for science. Select at the examination 2 subjects from "physics", "chemistry" and "biology" on the examination day.
- The answer sheet for science is double sided, so use each side to answer the questions for only one subject.
- At the top of the middle of the answer sheet there is a space to select the subject you will answer. (For science, this is at the top of both sides of the answer sheet.) Blacken the space with the corresponding subject. **If the selected subject is not blackened, your answers will not be graded.**

[Correct Example] When using the front side for "physics" and the reverse side for "chemistry"

Front Side

解答科目 Subject		
物理 Physics	化学 Chemistry	生物 Biology
<input checked="" type="radio"/>	<input type="radio"/>	<input type="radio"/>

この解答用紙のこの面に解答する科目を、1つ○で囲み、その下のマーク欄をマークしてください。
Circle the name of the subject of the examination you are taking on this side of the sheet, and fill in the oval under it.

Reverse Side

解答科目 Subject		
物理 Physics	化学 Chemistry	生物 Biology
<input type="radio"/>	<input checked="" type="radio"/>	<input type="radio"/>

この解答用紙のこの面に解答する科目を、1つ○で囲み、その下のマーク欄をマークしてください。
Circle the name of the subject of the examination you are taking on this side of the sheet, and fill in the oval under it.

[Incorrect Example] When selecting physics and chemistry

Front Side

解答科目 Subject		
物理 Physics	化学 Chemistry	生物 Biology
<input checked="" type="radio"/>	<input checked="" type="radio"/>	<input type="radio"/>

この解答用紙のこの面に解答する科目を、1つ○で囲み、その下のマーク欄をマークしてください。
Circle the name of the subject of the examination you are taking on this side of the sheet, and fill in the oval under it.

Reverse Side

解答科目 Subject		
物理 Physics	化学 Chemistry	生物 Biology
<input type="radio"/>	<input type="radio"/>	<input type="radio"/>

この解答用紙のこの面に解答する科目を、1つ○で囲み、その下のマーク欄をマークしてください。
Circle the name of the subject of the examination you are taking on this side of the sheet, and fill in the oval under it.

- One of the row numbers **1** , **2** , **3** , ... is provided for each question in the question booklets. These numbers are also printed on the answer sheets, so blacken the appropriate answer choice (① to ⑨) in the answer row with the same row number given in the corresponding question.
- The answer sheet has answer rows numbered from **1** to **75**, but you may not need to use all of them. Use only the answer rows needed to answer all questions, and leave the remaining answer rows blank.
- Every answer row has 9 choices (① to ⑨), but the actual number of choices provided in some questions may be less. In such cases, ignore the unused choices in the answer row.

[Exercise]

Q. What is the speed of sound in seawater? From ① to ⑤ below, choose the best answer. 12 m/s

① 30 ② 150 ③ 300 ④ 1500 ⑤ 15000

Row number

[Answer Sheet]

12	①	②	③	●	⑤	⑥	⑦	⑧	⑨
-----------	---	---	---	---	---	---	---	---	---

Since the choices for question 12 are from ① to ⑤, the choices from ⑥ to ⑨ should not be used.

(6) How to Answer for Japan and the World

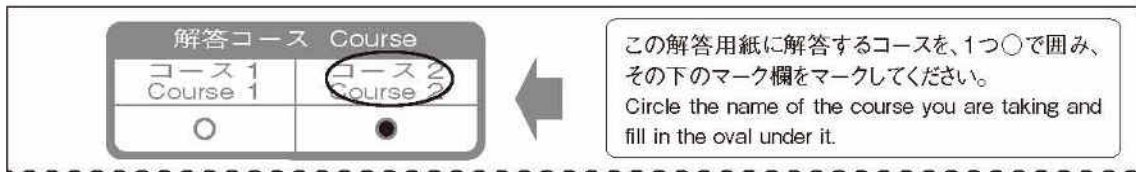
- a. One of the row numbers 1, 2, 3, ... is provided for each question in the question booklets. These numbers are also printed on the answer sheets, so blacken the one appropriate answer choice (① to ④) in the answer row with the same row number given in the corresponding question.
- b. The answer sheet has answer rows numbered from 1 to 60, but you may not need to use all of them. Use only the answer rows needed to completely answer the questions, and leave the remaining answer rows blank.

(7) How to Answer for Mathematics

- a. Mathematics consists of "Course 1" and "Course 2". There is one booklet for mathematics. Select at the examination either "Course 1" or "Course 2" on the examination day.
- b. At the top of the middle of the answer sheet there is a space to select the course you will answer. Blacken the space with the corresponding course. **If you do not blacken the selected course, your answers will not be graded.**

[Example] When "Course 2" is selected for mathematics

Front Side



- c. Be careful because choices for the mathematics questions begin with a minus sign (−) while choices for other subjects begin with ①②③...
- d. The questions use letters (A, B, C ...) as answer keys. The answer sheets are also printed with these keys, so blacken the appropriate numeral (from 0 to 9) or minus sign (−) for each key corresponding to the same key in the questions.
- e. The answer sheet has rows lettered from A to Z, but you may not need to use all of them. Use only the answer rows needed to completely answer the questions, and leave the remaining answer rows blank.
- f. In mathematics, there are two types of questions. In one type, you substitute a numeral or a minus sign for each answer key (letter) ; in the other type, you select the appropriate answer from several choices.
- g. For questions where the answer requires a number or the minus sign (−), since each of the denotation letters corresponds to a number from 0 to 9 or the minus sign (−), blacken the answer in the space specified.

[Exercise]

[Example 2]

When answering $\frac{\text{D} \sqrt{\text{E}}}{\text{FG}}$ equals $\frac{-\sqrt{3}}{14}$, blacken the spaces as follows



[Answer Sheet]

D	●	①	②	③	④	⑤	⑥	⑦	⑧	⑨
E	⊖	①	②	●	④	⑤	⑥	⑦	⑧	⑨
F	⊖	①	●	③	④	⑤	⑥	⑦	⑧	⑨
G	⊖	①	②	③	●	⑤	⑥	⑦	⑧	⑨

- h. The actual number of choices given for some multiple choice questions may be less than the number of choices printed on the answer sheet. In such cases, ignore the unused choices in the answer row.

[Exercise]

Q. For $a=2^{36}$, $b=3^{21}$, $c=30^7$ it holds that .

- ① $a < b < c$ ② $a < c < b$ ③ $b < a < c$
④ $b < c < a$ ⑤ $c < a < b$ ⑥ $c < b < a$



[Answer Sheet]

Answer within this range.

H	⊖	①	②	●	④	⑤	⑥	⑦	⑧	⑨
---	---	---	---	---	---	---	---	---	---	---

Since the choices for question are from ① to ⑤, do not use the minus sign ⊖ or the choices from ⑥ to ⑨.

